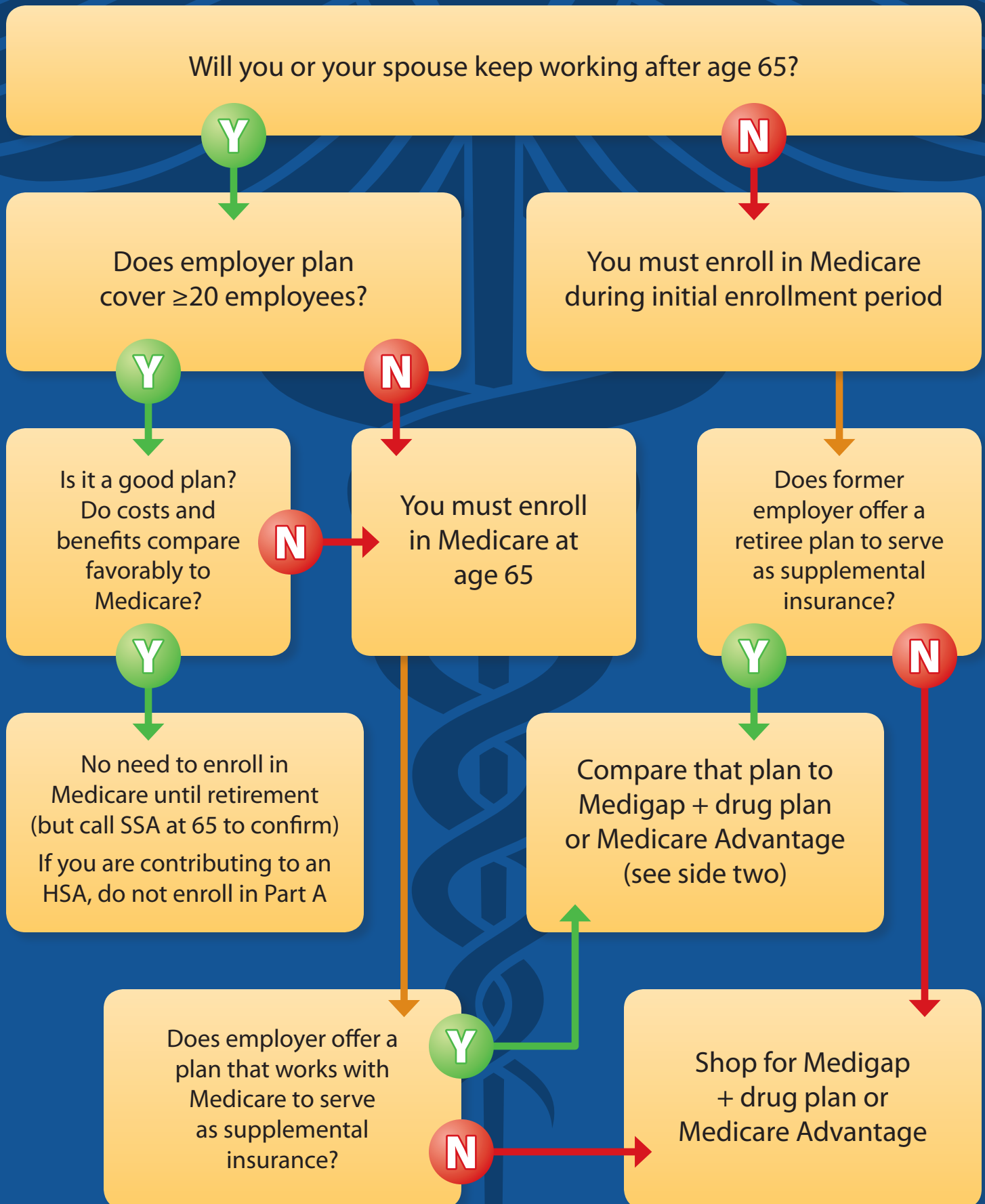


Medicare Enrollment Planning



Steps to take when comparing Medicare to 20+ employer insurance

STEP 1: Talk to your employer to see if your current insurance will change at age 65.

STEP 2: Gather all documents pertaining to your employer-sponsored insurance.

STEP 3: Find a comparable Medicare plan—either traditional Medicare A, B, D plus Medigap, or a Medicare Advantage plan.

STEP 4: Figure out which plan is a better value by comparing prices and benefits.

STEP 5: Consider other factors, such as spousal insurance, whether you'd have to change your doctors, etc.

STEP 6: Get a second opinion from a trusted insurance agent or consultant.

Considerations

- Can you see the doctor you want? Are the right specialists available if you need them?
- How much will you have to pay for your medications?
- What are the monthly premiums?
- What other out-of-pocket costs might you incur based on your expected health care usage?
- Are family benefits important? If the decision to go off the employer plan would affect your spouse's insurance, add the cost of spouse's coverage to your analysis.

To enroll in Medicare, visit ssa.gov/benefits/medicare or call (800) 772-1213

Randall A. Luebke, RFC, RMA, CMP, CWPP

President

Lifetime Paradigm, Inc.

260 Newport Center Drive

Ste 100

Newport Beach, CA 92660

800-810-1736

Info@LifetimeParadigm.com

www.LifetimeParadigm.com



Investment Advisory Services are offered through Lifetime Financial, Inc., a Registered Investment Advisory. Insurance and other financial products and services are offered through Lifetime Paradigm, Inc. or Lifetime Paradigm Insurance Services. Neither Lifetime Financial, Inc. nor Lifetime Paradigm, Inc., or its associates and subsidiaries provide any specific tax or legal advice. Only guidance is provided in these areas. For specific recommendations please consult with a qualified, licensed Advisor. Past performance is no guarantee of future results. Your results can and will vary. Investments are subject to risk, including market and interest rate fluctuations. Investors can and do lose money and, unless otherwise noted, they are not guaranteed. Information provided is for educational purposes only and is not intended for the sale or purchase of any specific securities product, service or investment strategy. BE SURE TO FIRST CONSULT WITH A QUALIFIED FINANCIAL ADVISER, TAX PROFESSIONAL, OR ATTORNEY BEFORE IMPLEMENTING ANY STRATEGY OR RECOMMENDATION DISCUSSED HEREIN.